



ENVIRONMENTAL TECHNOLOGY

# GAS16-P1™

## Gas Support System



### FEATURES

### BENEFITS

- |   |  |
|---|--|
| <b>COALESCING FILTER</b>  | • ENSURES THAT A CLEAN GAS SUPPLY IS FEEDING THE MECHANICAL SEAL             |
| <b>COMPONENTS ARE ENCLOSED IN A SECURE CABINET (THIS DOES NOT APPLY TO THE INTRINSICALLY SAFE AND EXPLOSION PROOF VERSIONS)</b> | • PROTECTS COMPONENTS FROM THE INDUSTRIAL ENVIRONMENT                        |
| <b>CHECK VALVE</b>  | • PREVENTS PRODUCT CONTAMINATION OF THE GAS PANEL DURING UPSET CONDITIONS    |
| <b>DUAL FLOW METERS</b>   | • THE SECOND FLOW METER WILL DISPLAY HIGH GAS FLOW WHICH INDICATES SEAL WEAR |





The modular GAS16-P1™ seal support system is designed to supply inert gas (e.g. Air or Nitrogen) to mechanical seals on processes that cannot tolerate contamination by water or oil barrier fluids. The self contained system (Figure 1) has a maximum inlet pressure of 20 Bar / 300 psig and a maximum outlet pressure of 16 Bar / 240 psig enabling it to be used on a wide range of applications. A Gas Panel can be used to purge vapor build up in seal cavities. The modular nature of the system enables the upgrading of the GAS16-P1™ so it can be used in Intrinsically Safe and Explosion Proof zoned environments (Figure 2). This modular design also enables the incorporation of a number of optional extras with the system including a humidifier and flow switch.



Figure 1: All instruments are contained within the cabinet.

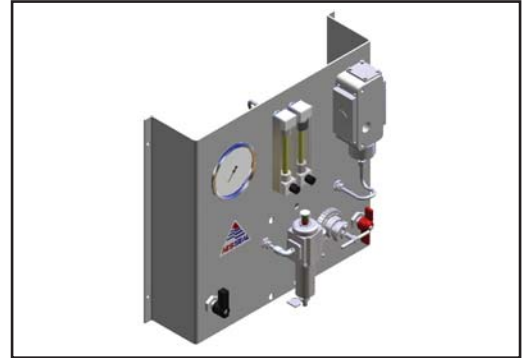
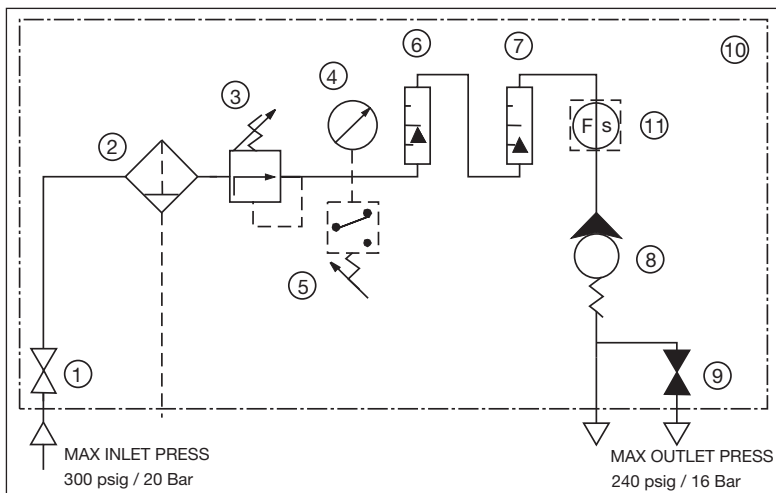


Figure 2: Intrinsically safe version of the Gas Panel.

### GAS16-P1™ SPECIFICATION



Note: The Gas Panel System may be fitted to non-AESSEAL® hydrodynamic dry running technology seals.

Item	Description
1	Isolating Valve
2	Coalescing Filter
3	Pressure Regulator
4	Pressure Gauge
5	Pressure Switch
6	Flow Meter - Standard Flow
7	Flow Meter - High Flow
8	Non-return Valve
9	Drain Valve
10	Cabinet
11	Flow Switch (optional)



\*AESSEAL® CLIP™ and Mixmaster V™ seal are not supplied with the GAS16-P1™ Support System.

THIS DOCUMENT IS DESIGNED TO PROVIDE DIMENSIONAL INFORMATION AND AN INDICATION OF AVAILABILITY.  
FOR FURTHER INFORMATION AND SAFE OPERATING LIMITS CONTACT OUR TECHNICAL SPECIALISTS AT THE LOCATIONS BELOW.



INVESTOR IN PEOPLE



USE DOUBLE MECHANICAL SEALS WITH HAZARDOUS PRODUCTS. ALWAYS TAKE SAFETY PRECAUTIONS:

- GUARD YOUR EQUIPMENT
- WEAR PROTECTIVE CLOTHING



#### UK Sales & Technical advice:

AESSEAL plc  
Mill Close  
Templeborough  
Rotherham  
S60 1BZ  
United Kingdom

Telephone: +44 (0) 1709 369966  
Fax: +44 (0) 1709 720788  
E-mail: seals@aes seal.com  
Internet: http://www.aes seal.com

Distributed by:

**Our Purpose:** *'To give our customers such exceptional service that they need never consider alternative sources of supply.'*

#### USA Sales & Technical advice:

AESSEAL Inc.  
10231 Cogdill Road  
Suite 105  
Knoxville, TN 37932  
USA

Telephone: +1 865 531 0192  
Fax: +1 865 531 0571  
E-mail: usa@aes seal.com

#### Systems Sales & Technical advice:

AESSEAL (MCK) Ltd.  
139A Hillsborough Old Road  
Lisburn  
N.Ireland  
BT27 5QE

Telephone: +44 (0) 28 9266 9966  
Fax: +44 (0) 28 9266 9977  
Tel/Fax Hotline: +44 (0) 28 9266 9988  
E-mail: MCK@aes seal.com